



Endüra
Resin Chip Floors

düraamen
engineered to perform

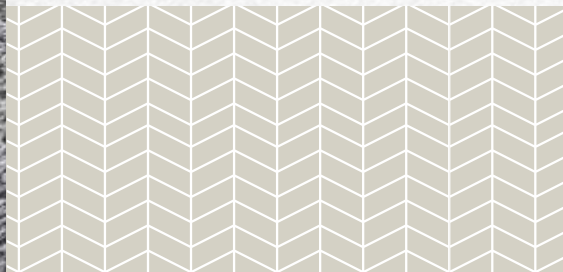
Blue Chip Flooring.

Professional-grade Epoxy Resin Chip Flooring

Though it may look similar to other brands, Endura isn't the "same ol'" epoxy chip flooring system. Endura is a professional-grade, high-build, epoxy & polyaspartic resin chip floor coating that is up to eight times the thickness of typical big-box store epoxy paint kits. When appropriately installed, Endura's superior bond strength will create a protective barrier that will last the life of the concrete without peeling, lifting, or cracking.

Endura resists hot tire pickup and chemicals, making it the perfect choice for garages and auto showrooms. Its seamless, decorative, slip-resistant finish makes it the safe and designer-friendly choice for any concrete surface.

Endura is available in eight popular color varieties. Numerous other colors are available by request.



Garages & More

- Residential garages & basements
- Auto showrooms & retail stores
- Entranceways, lobbies, and corridors
- Restrooms and locker rooms
- Laundry & clean rooms
- Healthcare facilities



Features



Fast install and quick return to service, return to service



Chemical Resistance of automotive fluids and harsh cleaning solutions



High compressive strength withstands heavy foot and rubber wheel traffic



Slip resistance resin chips



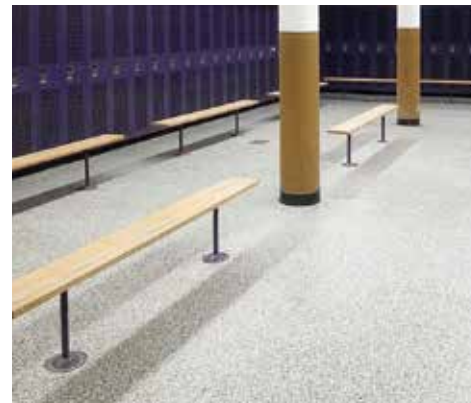
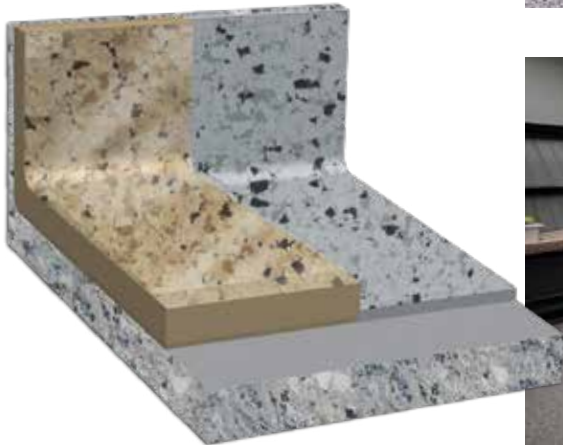
Moisture vapor resistant

Ultimate Protection

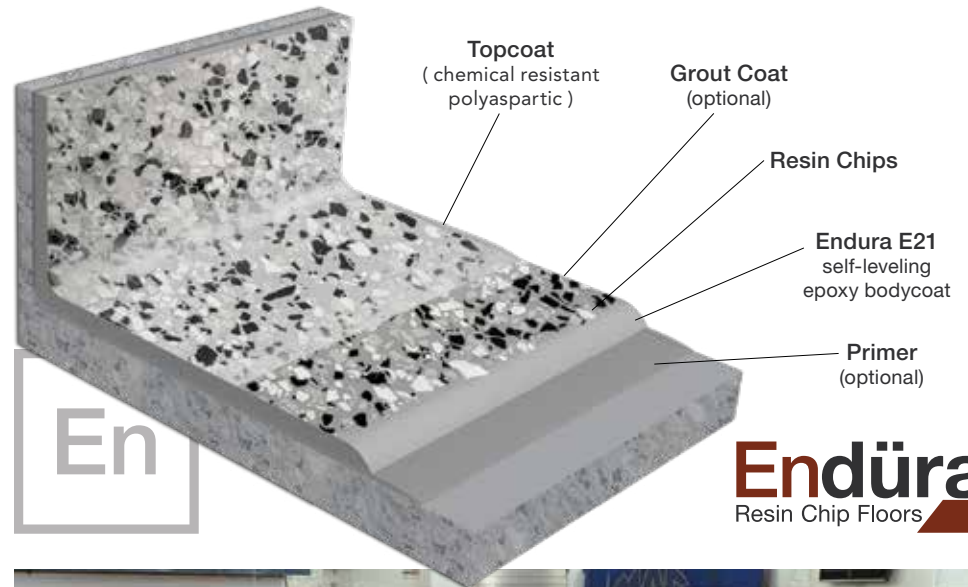
Endura is up to eight times thicker than conventional store-bought brands.

Endura
50–60mils thick

Big Box Brands
8–10 mils thick



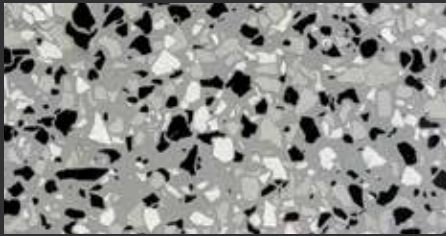
Endura Resin Chip Floor



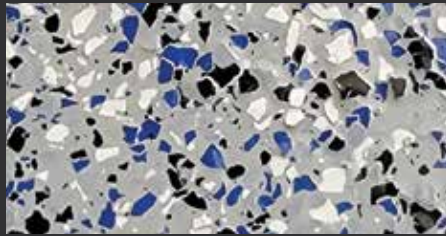
coral reef



creekbed



domino



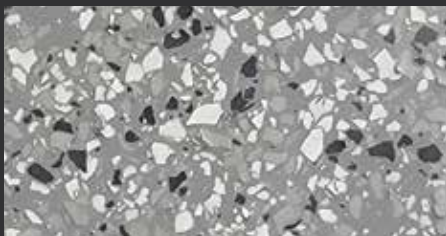
orbit



outback



shoreline



snowfall



wombat

The swatches above represent popular color choices. Ask your contractor or Duraamen representative for a complete color list. Duraamen provides this color guide for preliminary color selection only. Please refer to a physical sample prior to making a final selection. Contact Duraamen for assistance.



Contact your Duraamen-preferred floor coatings installer for more information, design options, and a quote.